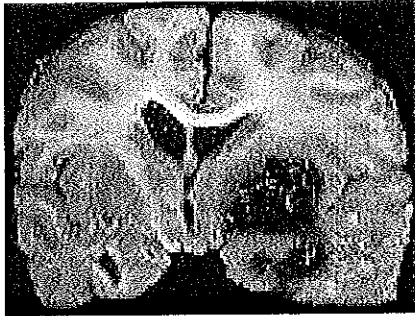


NROD65 Pathologies of the Nervous System (Spring 2007)

Instructor: Professor Joanne Nash

Room S-532A

jnash@utsc.utoronto.ca



“An in depth study of the causes, symptoms and molecular mechanisms underlying 11 neuropathologies of the nervous system, including Parkinson’s disease, motor neuron disease, schizophrenia.”

Lectures:

Tuesdays: 4-6pm MW130

Textbook:

There is no text book for this course. Course readings will be assigned throughout the course and uploaded as PDF files onto the intranet. Students are expected to download and read before class.

Questions and Office Hours

Office hours: Tuesdays: 1-3pm or by appointment (arranged by e-mail)

Short answer questions will be answered by e-mail, questions involving detailed answers will be addressed in office hours. On weekdays will respond within 48 hours.

*******Prerequisites: NROB60H & PSYB65H*******

*******Corequisite: NROC61H*******

******* please check that you have the these, as it will be checked *******

Intranet Resources

- Handouts for lectures will be uploaded onto the intranet as power point presentations no later than 24hours prior to lecture
- Course readings will be uploaded onto the intranet at least one week prior to class
- Please bring course readings and lecture handouts to the class
- Necessary resources related to assignments will be uploaded on the intranet as required

Exam

- Final exam only (3 hours)

Course work

- see over

Grading scheme

- Make a Brain (5%)
- Seminar (15%)
- Critical evaluation of research articles (15%)
- Ability to critically assess peers (5%)
- Debate + summary (20%)
- Class participation (10%)
- Final exam (30%)

Make a Brain (5%)

Please hand in three-dimensional model of one hemisphere of the human brain with specific brain regions highlighted using materials of their choice (e.g plasticine, paper mashe). Brains must be handed in on Monday 22nd Jan. Students must vote for the best brain on Tuesday between 2-4pm.

Seminar (15%)

Students will form groups of two or three. Each week one group of two or three students will present a 50 minute seminar on 2-5 research articles on the mechanisms underlying the disease related to the topic of the lecture. Ten minutes will be given for question time. When presenting, students are expected to provide handouts, which will be handed out just before the start of the seminar. Information in seminars presented by students will contribute to the final exam.

Assessment of research articles (15%)

Each week a summary of what the figures show, i.e the results of the paper for each research paper will be handed in at the start of class. 50% of these will be marked to give 15% of final mark. There is no page limit for the summaries. In this case size (length) does not matter!!!

Ability to critically assess peers (5%)

Each week students not presenting a seminar will critically assess peer's presentations. Assessments will be handed in the week subsequent to lecture. Students will be assessed on their ability to critically evaluate student presentations. Just to emphasise, you are evaluating how good the presentation was at getting the key points of the paper across in an interesting manner.

Debate (10%) + summary (10%)

On week 6 there will be a class debate. The topic to be discussed:

‘Should Street Drugs be Used as Therapies to Treat Neurological Disorders?’

During the first class, all students will be divided into 2 teams. Each team will take a different stance (FOR or AGAINST on the above question). Students must carry out their own literature searches to formulate the arguments. Guidelines for searches will be given on week 1. One film documentary will be made available from week one until the day of the debate to help with the assignment. This should be watched in your own time. On

the day of the debate JN will introduce the topic, then, both teams will drive the debate. Each team will form a convincing argument in support of their given topic. At the end of the debate there will be a presentation on drug development to treat neurological disorders by JN to round up the debate.

Each student must submit a tabloid style article taking their stance on the debate written in the form of a press release. Must be 2 pages (double spaced, with refs on a separate page). **AT THE BEGINNING OF CLASS. Must have references.** Oral contribution to the debate: 10% total marks; summary: 10% of marks respectively).

Class Participation and Attendance at Departmental Seminars (5%)

Each week a mark out of 3 will be give for participation in the class and knowledge of relevant course readings. Also during the duration of the course it is expected that all students attend departmental seminars. Attendance to these is mandatory. Each seminar will is worth two extra marks on that given week.

Final Exam (30%)

Final exam will be 3hours. There will be least 8 questions on 5 topics (a topic is defined as a lecture week). Students must answer 4 questions from the 5 topics. None of the questions answered can be from the same topic.

Tardy Assignment Submission

Unless accompanied by a medical note or something of similar standing, late submission of summaries for seminar and debate will not be accepted. For the research article, late papers will be docked 15% per day unless accompanied with a medical note.

Course Outline Summary*

Week	Topic
1	Course Outline
3	Parkinson's disease
4	Stroke
5	Alzheimer's disease
6	Drug Addiction
-----	Reading week
7	Class Debate
8	Prion disease
9	Huntington's disease
10	ALS / motor neuron disease
11	Schizophrenia
12	Multiple Sclerosis
?	Epilepsy

* Subject to change

Important Dates

22nd January: make a brain deadline

23rd January: votes for make a brain

27th February: Class Debate in S-403